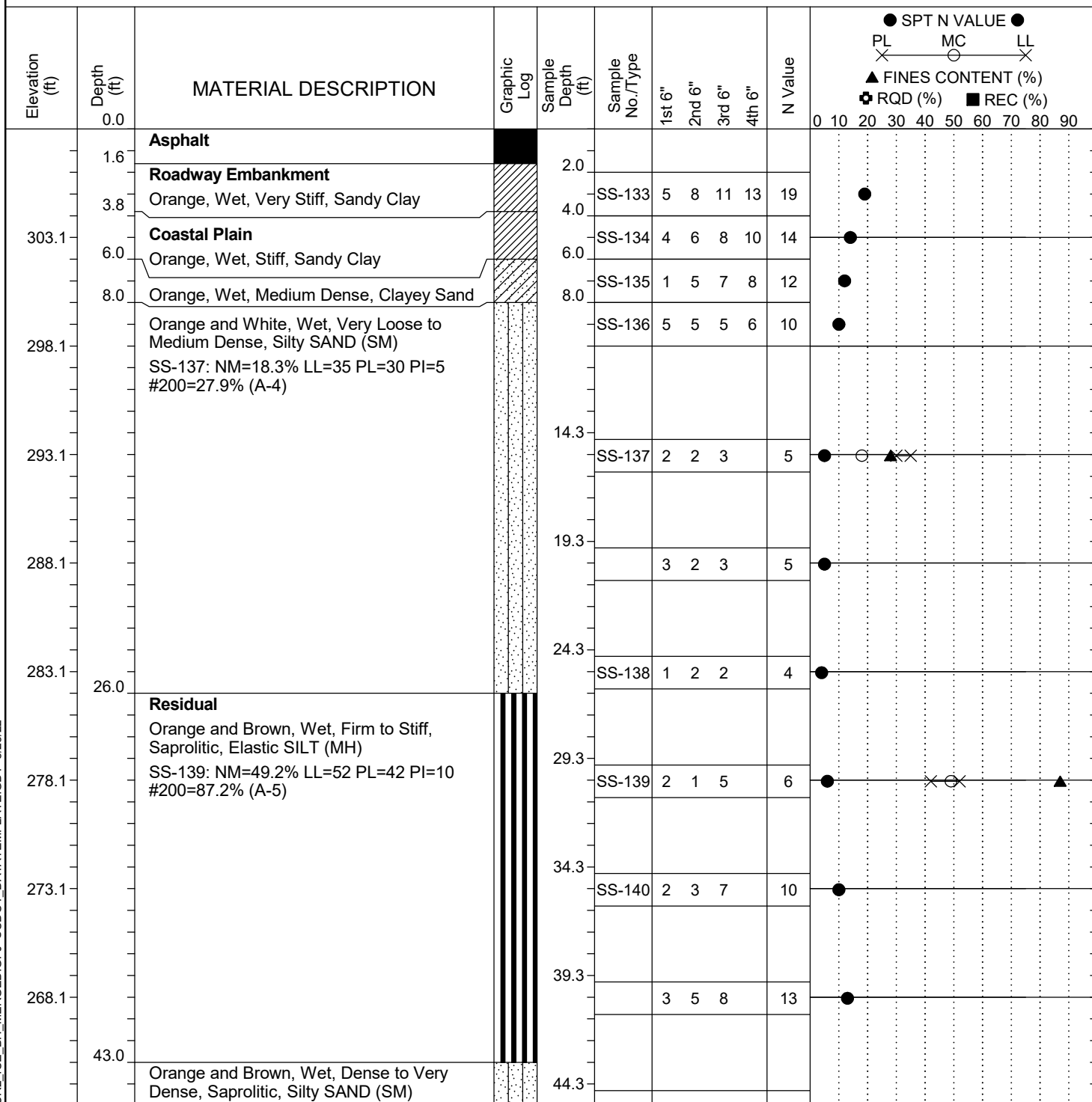


Project ID:	P039719	County:	Richland	Boring No.:	G-124
Site Description:	Carolina Crossroads Phase 2			Route:	Broad River Rd.
Eng./Geo.:	C. McIlroy	Boring Location:	614+58	Offset:	13 LT
Elev.:	308.1 ft	Latitude:	34.03945079	Longitude:	-81.09359924
Total Depth:	75.1 ft	Soil Depth:	75.1 ft	Date Started:	3/15/2022
Core Depth:	N/A ft	Date Completed:	3/16/2022		
Bore Hole Diameter (in):	2.25	Sampler Configuration		Liner Required:	Y (N)
Drill Machine:	D-50 #435	Drill Method:	RW	Hammer Type:	Automatic
Core Size:	N/A	Driller:	P. Mattis	Energy Ratio:	84.4%
		Groundwater:	TOB	N/A	24HR FIAD



LEGEND

Continued Next Page

SC_DOT 20-01_CCR2 ICE_BH_MERGED.GPJ SCDOT_DATATEMPLATE.GDT 8/23/22

SAMPLER TYPE		DRILLING METHOD	
SS - Split Spoon	NQ - Rock Core, 1-7/8"	HSA - Hollow Stem Auger	RW - Rotary Wash
UD - Undisturbed Sample	CU - Cuttings	CFA - Continuous Flight Augers	RC - Rock Core
AWG - Rock Core, 1-1/8"	CT - Continuous Tube	DC - Driving Casing	